



MONTHLY MEMBERSHIP PROGRESS REPORT

District 26 M5

Results as of: 09/30/2017

GMT: JOE AL PICONE

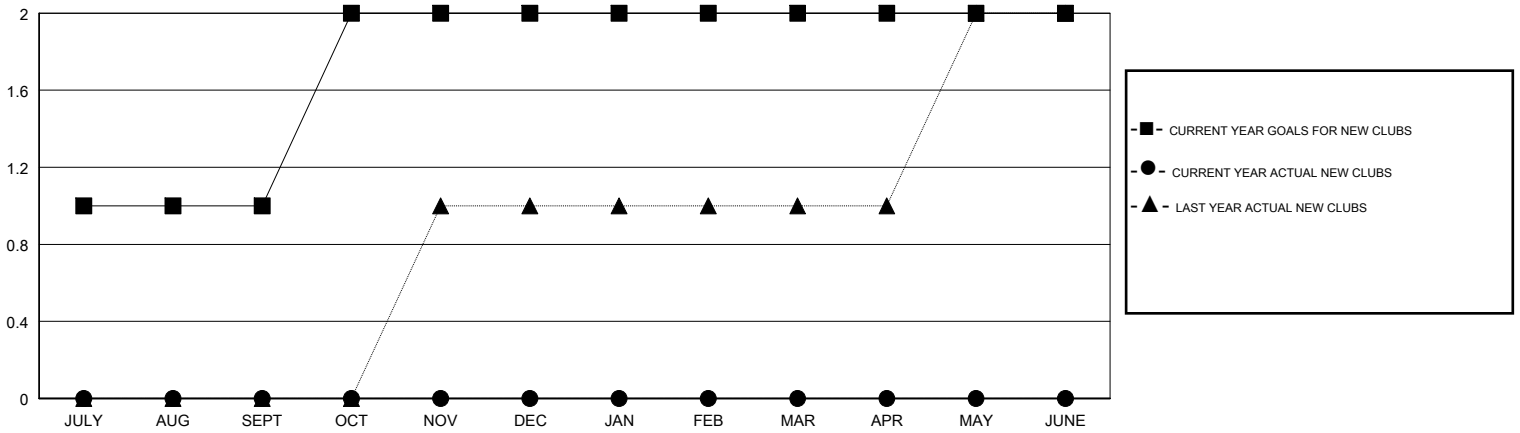
LOCATION MISSOURI

GMT CA

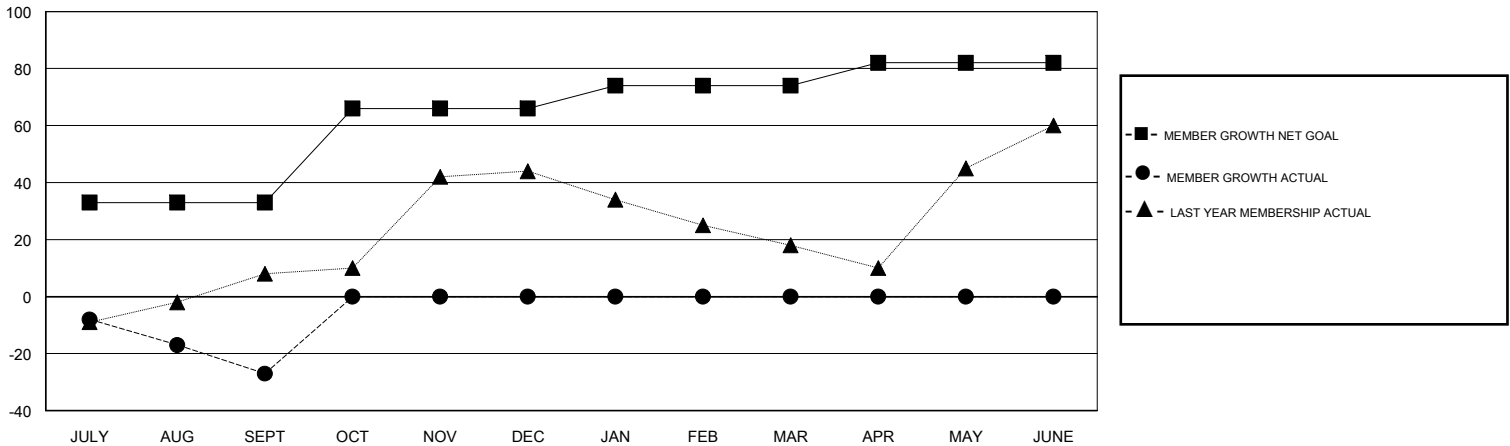
Clubs			
RESULTS FOR 2017-2018			
QUARTER	NEW CLUB GOAL	NEW CLUBS	DROPPED CLUBS
JULY/AUG/SEPT	1	0	0
OCT/NOV/DEC	1	0	0
JAN/FEB/MAR	0	0	0
APR/MAY/JUNE	0	0	0

Members			
RESULTS FOR 2017-2018			
QUARTER	MEMBER GROWTH NET GOAL	MEMBER GROWTH ACTUAL	DROPPED MEMBERS ACTUAL (including transfers)
JULY/AUG/SEPT	33	24	51
OCT/NOV/DEC	33	0	0
JAN/FEB/MAR	8	0	0
APR/MAY/JUNE	8	0	0

GOALS AND ACTUAL NEW CLUBS CUMULATIVE



GOALS AND ACTUAL MEMBERS CUMULATIVE



DROPPED CLUBS: 0

12 CLUBS OF 50 ADDED 1 OR MORE NEW MEMBERS

GENDER DISTRIBUTION	
MALE	818 (67.27%)
FEMALE	398 (32.73%)
Women Percentage Fiscal Year Goal: 35%	

DROPPED MEMBERS	
DECEASED	10
CLUB CANCELLED	0
OTHER	41
TOTAL	51

[CLICK HERE FOR CUMULATIVE MEMBERSHIP DATA](#)

TOTAL FAMILY UNIT MEMBERS	272
FAMILY MEMBERS PAYING HALF DUES	140